





# Shaftesbury Hall, St. Georges Place, Cheltenham, GL50

Offers Over £300,000

🛏 2 🪑 2 🛋 1





A wonderful grade two listed, chain free apartment in the middle of town. Nestled within secure, gated grounds in the centre of Cheltenham, this large first-floor apartment seamlessly blends modern living with timeless character. With two generously proportioned bedrooms, period features, and the added convenience of contemporary fittings, this property offers an exceptional opportunity for those seeking both style and comfort in an ideal location, and is offered with no onward chain.

The main living area is both spacious and welcoming, offering ample room for a variety of configurations to suit your lifestyle. Whether you're relaxing after a long day, or working from home, this versatile space can accommodate all your needs. The neutral tones and contemporary décor throughout provide a stylish and calming backdrop, ready to be tailored to your personal taste.

The separate kitchen/dining area has been thoughtfully designed with a modern lifestyle in mind. The kitchen is equipped with everything needed for modern cooking, including a built-in oven, hob, and dishwasher, with space for additional appliances if required. The layout of the kitchen allows for efficient meal preparation while still remaining perfect for social gatherings and day-to-day living.

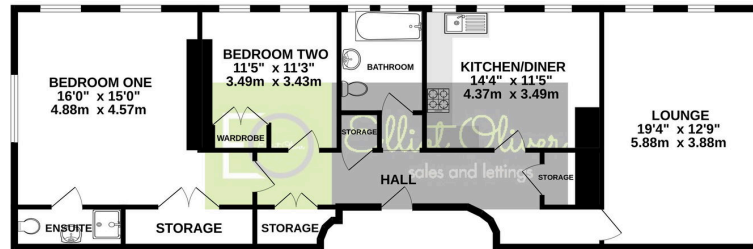
The main bedroom is a true retreat, offering plenty of space, comfort and a large walk in wardrobe. This room benefits from an en-suite shower room, fitted to a high standard with modern fixtures and fittings, including a spacious walk-in shower, and stylish tiling. The master bedroom's neutral décor creates a serene environment, with ample space for additional furniture, making it easy to create a cozy, personalized haven.

The second bedroom is also generously sized and comes complete with a built-in wardrobe, offering plenty of storage space. This room is ideal for use as a guest bedroom, or a home office.

In addition to the en-suite in the master bedroom, there is a modern family bathroom which is beautifully finished with contemporary fittings. The bathroom features a bathtub, hand wash basin, WC and elegant tiling throughout.



FIRST FLOOR  
1034 sq.ft. (96.1 sq.m.) approx.



TOTAL FLOOR AREA: 1034 sq.ft. (96.1 sq.m.) approx.  
Whilst every attempt has been made to ensure the accuracy of the floorplan contained here, measurements of doors, windows, rooms and any other items are approximate and no responsibility is taken for any error, omission or mis-statement. This plan is for illustrative purposes only and should be used as such by any prospective purchaser. The services, systems and appliances shown have not been tested and no guarantee as to their operability or efficiency can be given.  
Made with Mirograph 12/2014

- Elegant Period Features
- Spacious living area
- Ample storage space throughout
- Allocated parking space
- Beautifully maintained communal gardens
- Modern kitchen/dining area
- Prime Cheltenham location
- No onward chain

